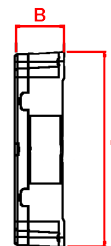
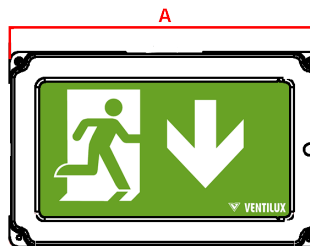


# TREO

## IP65 DALI Exit Box



### Materials

Housing: Polycarbonate  
Decals: Polycarbonate

Standard Colour: White Ral 9016  
Alternative Colour: Black Ral 9017  
\*add WH for White or BL for Black housing to order code

### Warranty

Standard Warranty: 6 Years  
Alternative Warranty: 10 Years  
Add /10Y to Order Code

Order Code	TRM3/LED/*DA
Mode of operation	Maintained DALI
Emergency duration	3 hours
Input voltage	230/240V 50/60Hz
Power consumption	7.2VA, I <sub>rated</sub> = 30mA
Battery type	3.6V, 2.1Ah Ni-Mh
Battery charger	Nominal Charge = 75mA
Battery low voltage cut off	2.5V
Battery discharge current @ 3.6VDC	0.485A
Lamp	P <sub>rated</sub> = 1W LED
Lamp colour	6000K
Nominal Lamp Power	P <sub>rated</sub> = 1W LED
Nominal Lamp Current	350mA
Viewing Distance	30 metres
Lamp Lifetime	L <sub>80</sub> B <sub>50</sub> 80000 Hours
Maximum output voltage with no lamp connected	U OUT = 7.9 VDC
Degree of protection	IP65, IK10
Cable Entry	To be Drilled and Glanded on installation
Luminaire class	Class I
Weight	1.05kg
Packaging Weight	0.103kg
Standards	EN61347-2-7, EN61347-2-13, EN 60598-2-22
Environment	0°C to 45°C up to 80% relative humidity.

System	Order Code	Mode of Operation	Battery	Battery P/N	Viewing Distance	Dimensions (mm)		
						A	B	C
DALI	TRM3/LED/*DA	Maintained	3.6V 2.1Ah Ni-Mh	70158	30 Metres	323	52	203
Alternative Systems Available:								
Standalone	TRM3/LED/*	Maintained	3.2V 1.5Ah LiFePO4	70163	30 Metres	323	52	203
Central Battery	TR/LED/230S/*	Slave	n/a	n/a	30 Metres	323	52	203
DALI Central Battery	TR/LED/230S/*DA	Slave	n/a	n/a	30 Metres	323	52	203

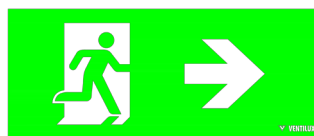
### Legends (Supplied with Product)



01 for application of Left Arrow



02 for application of Down Arrow



3 for application of Right Arrow



04 for application of Up Arrow