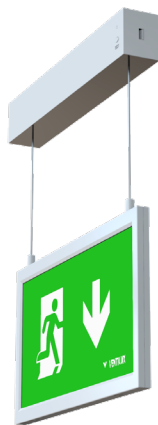
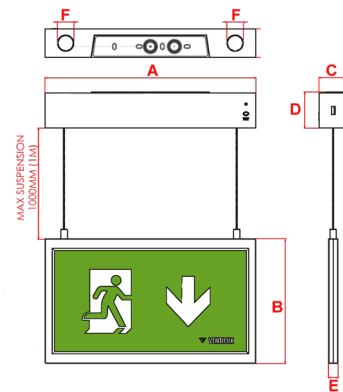


Atlantic SP Gen 2

Suspended Exit Sign



With Additional
Recessing Kit



30m
Viewing
Distance

IP
40

LiFe PO4
Battery

Wall and
Ceiling
Mounting

1.4Kg

5700K

Class
II

6Y
Warranty

Materials

Housing: ABS
Decal Legend: Polypropylene

Standard Colour: White - RAL 9016

Alternative Colour: Black - RAL 9017
add /BL to order code

Warranty

Standard Warranty: 6 Years
Alternative Warranty: 10 Years
Add /10Y to order code

Order Code	ATSP2M3/LED
Mode of operation	Maintained
Emergency duration	3 hours
Input voltage	230/240V (207VAC - 264VAC) 50/60Hz
Power consumption	5.8VA, $I_{nom} = 24mA$ (Full Battery)
Battery type	Rechargeable LiFePO4 Battery 6.4V 0.6Ah
Battery low voltage cut off	5.7V DC
Battery discharge current @ 6.4V DC	0.15A
Lamp	1 watt LED Strip
Lamp colour	5700K
Lamp Life	$L_{80} B_{50}$ 80000 Hours
Viewing Distance	30m
Nominal lamp voltage	$V_{rated} = 5.5V$ DC
Nominal lamp current @ 6.4V DC	$I_{rated} = 0.14A$ CC
Nominal lamp power	$P_{rated} = 1W$
Maximum output voltage with no lamp connected	U-OUT = 10V DC
Ingress Protection	IP40
Cable entry	20mm on top and rear of product
Luminaire class	Class II
Product Weight	1.4Kg
Packaging Weight	0.15Kg
Standards	EN61347-2-7, EN61347-2-13, EN 60598-2-22, EN 55015
Environment	0°C to 45°C up to 80% relative humidity.

System	Order Code	Mode of Operation	Battery	Battery P/N	Viewing Distance	Dimensions (mm)					
						A	B	C	D	E	F
Standalone	ATSP2M3/LED	Maintained	LiFePO4 6.4V, 0.6Ah	70270	30	330	195	45	56.5	15	26
Alternative Systems Available: Specification sheets available upon request											
DALI	ATSP2M3/LED/DA	Maintained	LiFePO4 3.2V, 3.2Ah	70261	30	330	195	45	56.5	15	26
DALI Wireless	ATSPM3/LED/DAW	Maintained	LiFePO4 3.2V, 3.2Ah	70261	30	330	195	60	80	15	26
Self-Test	ATSP2M3/LED/ST	Maintained	LiFePO4 3.2V, 3.2Ah	70261	30	330	195	45	56.5	15	26

Available Accessories					
Order Code	Description	Material	Cutout (mm)	Dimensions(mm)	
AT/RK	Recessing Kit	ABS	370 x 55	390	80

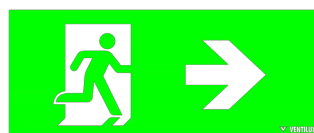
Included Legends



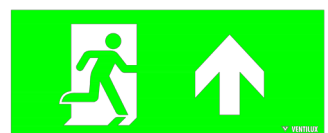
ISO 01



ISO 02



ISO 03



ISO 04