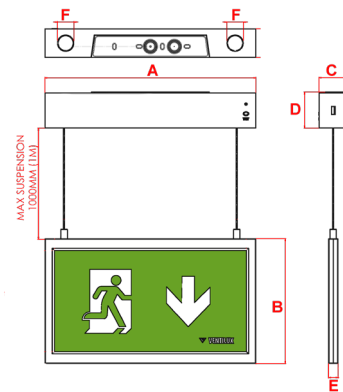


# Atlantic SP Gen 2

## Suspended Exit Sign DALI



With Additional  
Recessing Kit



30m Viewing Distance	IP 40	LiFePO4 Battery	Wall and Ceiling Mounting
1.4Kg	5700K	Class II	6Y Warranty

## Materials

Housing:	ABS
Decal Legend:	Polypropylene
Standard Colour:	White - RAL 9016
Alternative Colour:	Black - RAL 9017
	Add /BL to order code

## Warranty

Standard Warranty:	6 Years
Alternative Warranty:	10 Years
	Add /10Y to order code

Order Code	ATSP2M3/LED/DA
Mode of operation	Maintained
DALI Interface	For Controlled Monitoring and Reporting
Emergency duration	3 hours
Input voltage	230/240V (207VAC - 264VAC) 50/60Hz
Power consumption	4.5VA, $I_{nom} = 19mA$ (Full Battery)
Battery type	Rechargeable LiFePO4 Battery 3.2V 3.2Ah
Battery discharge current @ 3.2V DC	0.43A
Lamp	1 watt LED Strip
Lamp colour	5700K
Lamp Life	$L_{80} B_{50}$ 80000 Hours
Viewing Distance	30m
Nominal lamp voltage	$V_{rated} = 3V$ DC
Nominal lamp current	$I_{rated} = 0.35A$ CC
Nominal lamp power	$P_{rated} = 1W$
Maximum output voltage with no lamp connected	U-OUT = 5V DC
Ingress Protection	IP40
Cable entry	20mm on top and rear of product
Luminaire class	Class II
Product Weight	1.4Kg
Packaging Weight	0.15Kg
Standards	EN61347-2-7, EN61347-2-13, EN 60598-2-22, EN 55015
Environment	0°C to 45°C up to 80% relative humidity.

System	Order Code	Mode of Operation	Battery	Battery P/N	Viewing Distance	Dimensions (mm)					
						A	B	C	D	E	F
DALI	ATSP2M3/LED/DA	Maintained	LiFePO4 3.2V, 3.2Ah	70261	30	330	195	45	56.5	15	26
Alternative Systems Available: Specification sheets available upon request											
Standalone	ATSP2M3/LED	Maintained	LiFePO4 6.4V, 0.6Ah	70270	30	330	195	45	56.5	15	26
DALI Wireless	ATSPM3/LED/DAW	Maintained	LiFePO4 3.2V, 3.2Ah	70261	30	330	195	60	80	15	26
Self-Test	ATSP2M3/LED/ST	Maintained	LiFePO4 3.2V, 3.2Ah	70261	30	330	195	45	56.5	15	26

Available Accessories					
Order Code	Description	Material	Cutout (mm)	Dimensions(mm)	
AT/RK	Recessing Kit	ABS	370 x 55	390	80

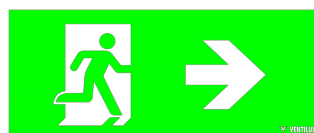
## Included Legends



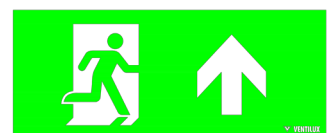
ISO 01



ISO 02



ISO 03



ISO 04